



Special Rates when you book by Sep 30, 2019

RIVER CRUISE FOR WINE LOVERS

Oak Knoll District Wine Cruise • March 26 – April 2, 2020

Bordeaux • Libourne • Saint-Émilion • Blaye • Bourg • Pauillac • Cadillac

AmaDolce



Suite, Violin Deck
French Balcony, 255 sq. ft.

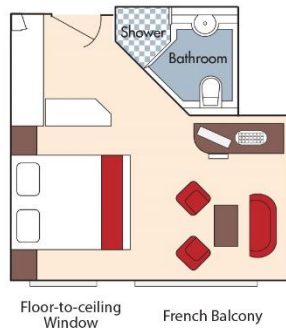
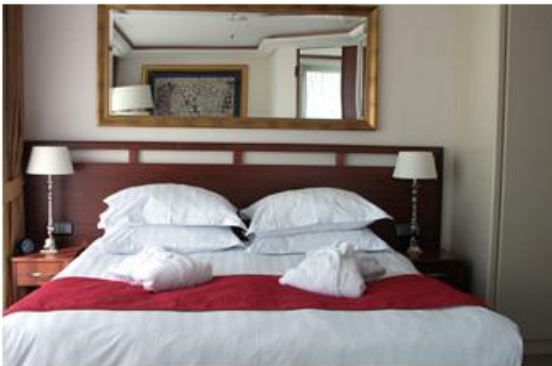
Note: Stateroom layouts shown below are not to scale.



Brochure Fare: ~~\$5,698~~ pp
Your Rate: \$5,448 pp



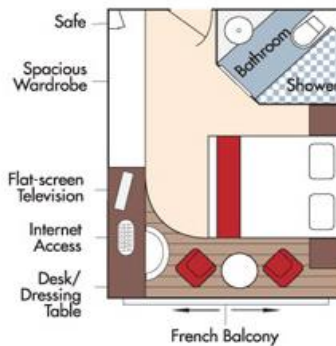
CAT. A+, Violin Deck
French Balcony, 225 sq. ft.



Brochure Fare: ~~\$5,498~~ pp
Your Rate: \$5,248 pp

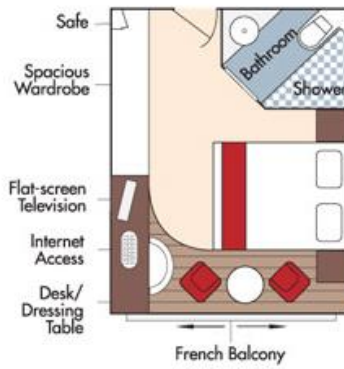


CAT. A, Violin Deck
French Balcony, 170 sq. ft.



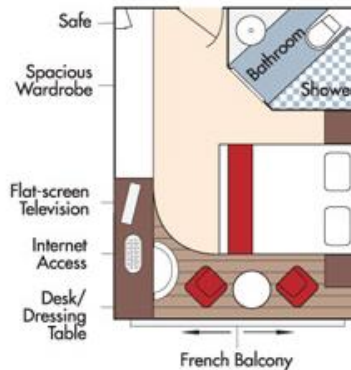
Brochure Fare: ~~\$4,498~~ pp
Your Rate: \$4,248 pp

CAT. B, Violin & Cello Deck
French Balcony, 170 sq. ft.



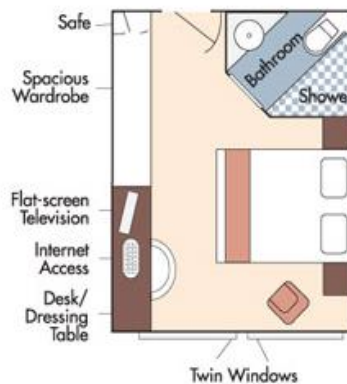
Brochure Fare: ~~\$4,398~~ pp
Your Rate: \$4,148 pp

CAT. C, Violin & Cello Deck
French Balcony, 170 sq. ft.



Brochure Fare: ~~\$4,198~~ pp
Your Rate: \$3,948 pp

CAT. E, Piano Deck
Fixed Windows, 170 sq. ft.



Category D
Brochure Fare: ~~\$3,498~~ pp
Your Rate: \$3,248 pp

Category E
Brochure Fare: ~~\$3,199~~ pp
Your Rate: \$2,949 pp

AmaDolce Deck Plan



Fares listed are cruise-only, per person based on double occupancy and do not include port charges of \$189 per person.