

Wine Cruise on the Danube

to Benefit the Sonoma County Farmworker Community



Wachau Valley, Austria

Aboard the AmaMagna • 7 Nights • April 14 to 21, 2021
Vilshofen, Germany to Budapest, Hungary

Take an exclusive tour on the only comprehensive wine cruise that will take you through Sonoma County's wine region, all while enjoying the wine regions of Germany, Austria, and Hungary. Indulge your passion for timeless architecture and art in four magnificent capitals: Budapest, Bratislava, Vienna and Prague. Savor Wachau Valley wines and let the hills come alive with the sounds of music in Salzburg and the Austrian Lake District. Join some of Sonoma County's leading wine professionals for a truly unique and exclusive experience!

Your Exclusive Wine Experience Includes:

- Welcome Reception featuring Sonoma County wines
- Five wine-food pairing dinners led by your Wine Hosts, each one featuring world-class wines from a different AVA within Sonoma County
- An evening gala and silent auction benefitting Sonoma County farmworkers
- Sonoma County regional wine tasting and education led by Master Sommelier, Geoff Kruth *(optional cost)*
- Special tours and tastings at local wineries



Budapest

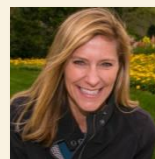


Vienna



MEET YOUR HOSTS
FOR AN EXCLUSIVE
TOUR THROUGH
SONOMA COUNTY'S
WINE REGION

FERRARI-CARANO
Vineyards and Winery



Sarah
Quider
EXECUTIVE
WINEMAKER

DUTTON
Goldfield



Steve
Dutton
GRAPE
GROWER/
PARTNER

RODNEY STRONG
VINEYARDS



Justin
Seidenfeld
DIRECTOR OF
WINEMAKING



Geoff
Kruth
MASTER
SOMMELIER



877-651-7447 WineClub@CruiseShipCenters.com

Wine Cruise on the Danube

to Benefit the Sonoma County Farmworker Community

YOUR CRUISE ITINERARY



Date	Destination	Activities/Shore Excursions
Apr 14	Vishofen	EMBARKATION Oktoberfest Celebration
Apr 15	Passau	"City of Three Rivers" walking tour OR Passau Castle Hike OR guided bike ride from Passau to Wernstein OR Sonoma County wine seminar hosted by Geoff Kruth (optional cost)
Apr 16	Linz	"UNESCO City of Media Arts" walking tour OR "Cultural Mile" bike tour OR Full-day Salzburg excursion Half-day Český Krumlov excursion
Apr 17	Grein	Greinburg Castle visit
Apr 18	Melk Spitz	Melk Abbey OR Melk to Spitz bike tour Dürnstein walking tour OR Dürnstein Fortress hike OR Spitz to Dürnstein bike tour OR Spitz hike Exclusive Wine Experience
Apr 19	Vienna	"Imperial Vienna" tour OR Vienna bike tour Schönbrunn Palace & Gardens
Apr 20	Scenic Cruising Budapest	Danube Bend OR Sonoma County wine seminar hosted by Geoff Kruth (optional cost) "Queen of the Danube" tour OR Castle Hill hike
Apr 21	Budapest	DISEMBARKATION

Itinerary subject to change



ABOUT THE SCGGF

Sonoma County Grape Growers Foundation (SCGGF) is a non-profit organization serving Sonoma County's farmworkers and families. SCGGF builds upon long-standing relationships with Sonoma County agricultural employers and local organizations to support community wide issues and initiatives that directly impact farmworkers and their families. SCGGF specifically develops partnerships and programs in the areas of recovery and resiliency, affordable housing, childcare, education, healthcare and workforce development. Your support ensures that Sonoma County is the region of choice for farmworkers and their families to work, live and thrive.

WHAT'S INCLUDED

- Deluxe accommodations in an outside stateroom (most with twin balconies) aboard the AmaMagna
- Expertly guided shore excursions in every port
- Complimentary Wi-Fi access
- La Chaîne des Rôtisseurs dining experience, featuring all meals on board with multiple dining venues
- Regionally inspired award-winning cuisine made with locally sourced ingredients
- Unlimited wines, beer and soft drinks with every lunch and dinner on board
- "Sip & Sail" daily cocktail hour with complimentary beer, wines and spirits



STATEROOM PRICES

Starting at:

\$3,549 per person

Includes exclusive wine package!

Book Today Before it Sells Out!

877-651-7447

WineClub@CruiseShipCenters.com



Terms & Conditions: All rates are per person in USD, cruise only, based on double occupancy in a Category E stateroom unless stated otherwise. Offer is not combinable with any other promotions/ discounts, is limited to availability and subject to termination without notice. Minimum of 20 guests required for the wine cruise to operate. Winery representatives and specific wines for the wine cruise may change without notice. Every effort will be made to provide suitable substitutions. By placing a deposit, you agree to the special terms of the wine cruise. Penalties up to 100% apply. We recommend travel insurance to protect your vacation. Other restrictions may apply. Expedia CruiseShipCenters reserves the right to revise any errors on the flyer; itinerary subject to change. For full terms and conditions contact Expedia CruiseShipCenters, North Bay. CST#2101270-40