



# RIVER CRUISE FOR WINE LOVERS

## Scheid Vineyards Wine Cruise • October 14 –21, 2021

Bordeaux • Libourne • Blaye • Bourg • Pauillac • Cadillac • Bordeaux

### AmaDolce

**Book by July 31, 2021**  
**SAVE \$500**  
per stateroom and receive  
**2 bottles of Scheid Reserve**  
**Wines in your stateroom!**



Suite, Violin Deck  
French Balcony, 255 sq. ft.

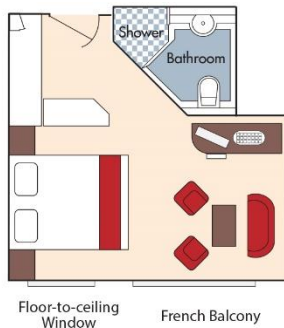
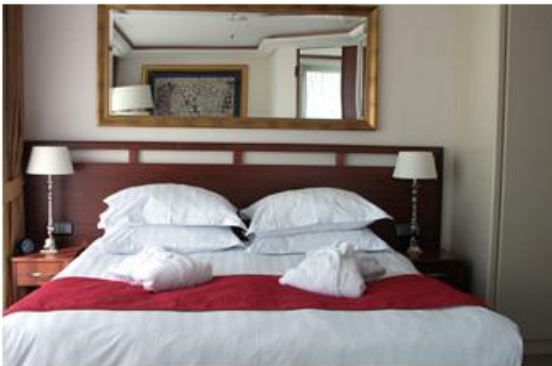
*Note: Stateroom layouts shown below are not to scale.*



Your Rate: ~~\$6,698~~ \$6,448 pp



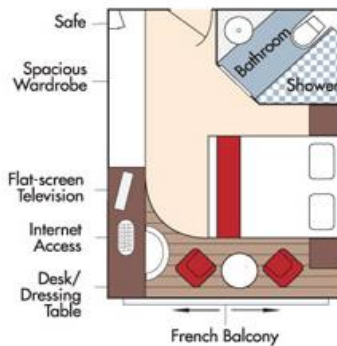
CAT. A+, Violin Deck  
French Balcony, 225 sq. ft.



Your Rate: ~~\$6,398~~ \$6,148 pp

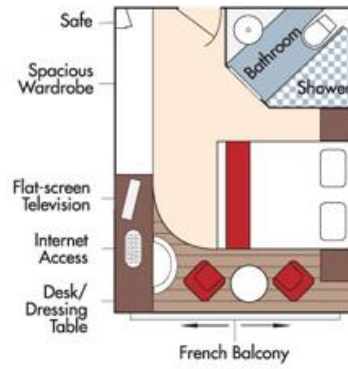


CAT. A, Violin Deck  
French Balcony, 170 sq. ft.



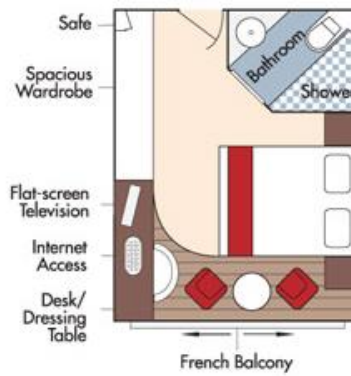
Your Rate: ~~\$5,398~~ \$5,148 pp

**CAT. B, Violin & Cello Deck**  
French Balcony, 170 sq. ft.



Your Rate: ~~\$5,298~~ \$5,048 pp

**CAT. C, Violin & Cello Deck**  
French Balcony, 170 sq. ft.



Your Rate: ~~\$4,998~~ \$4,748 pp

**CAT. E, Piano Deck**  
Fixed Windows, 170 sq. ft.

**CAT. D, Piano Deck**  
Fixed Windows, 170 sq. ft.



Category D  
Your Rate: ~~\$4,298~~ \$4,048 pp

Category E  
Your Rate: ~~\$3,999~~ \$3,749 pp

## AmaDolce Deck Plan



Fares listed are cruise-only, per person based on double occupancy including the early booking savings and do not include port charges of \$193.32 per person.