

# A WINE AND CHEESE CRUISE THROUGH FRANCE

## FINE WINE, GREAT CHEESE, AND WORLD-CLASS EXPERTISE!

Aboard AmaKristina • 7 Nights • May 30 – June 6, 2024

Arles • Avignon • Viviers • Tournon • Vienne • Trevoux • Lyon

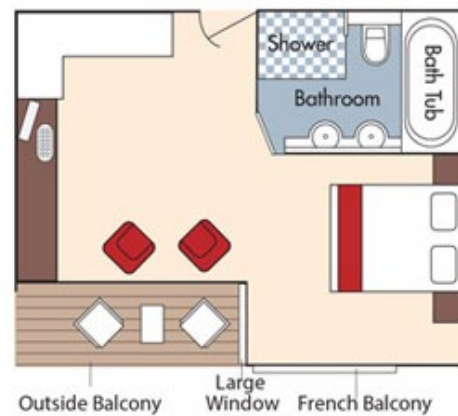
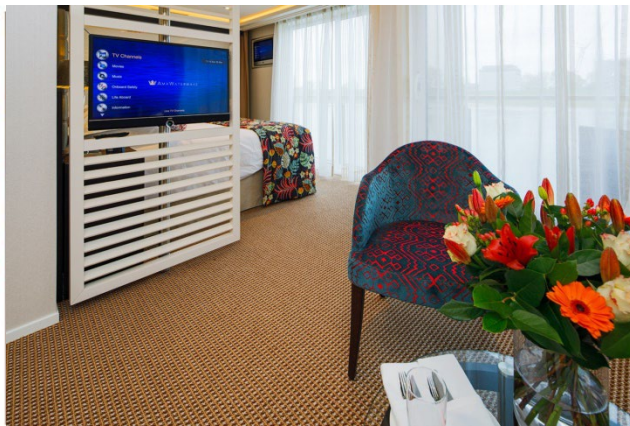
*Note: Stateroom layouts shown below are not to scale.*



### Suite *Violin Deck*

French Balcony & Outside Balcony, 350 sq. ft.

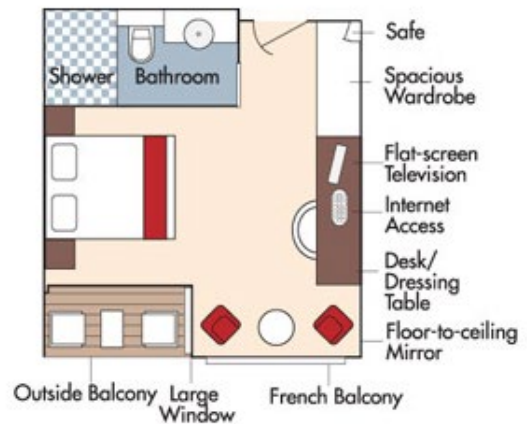
Wine Cruise Rate: \$8,597 pp



### Category AA *Violin Deck*

French Balcony & Outside Balcony, 235 sq. ft.

Wine Cruise Rate: \$7,297 pp



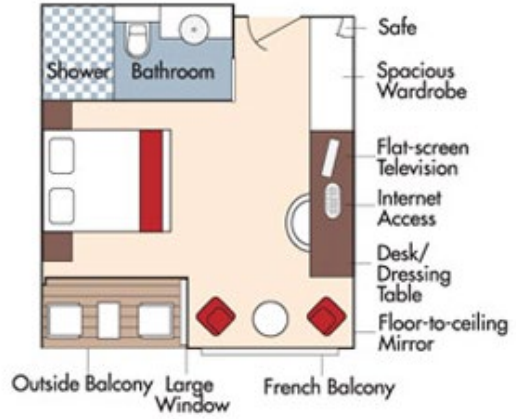
*Fares listed are cruise-only, per person based on double occupancy and include the exclusive wine package. Port charges of \$224 per person are additional.*



### Category AB *Cello Deck*

French Balcony & Outside Balcony, 235 sq. ft.

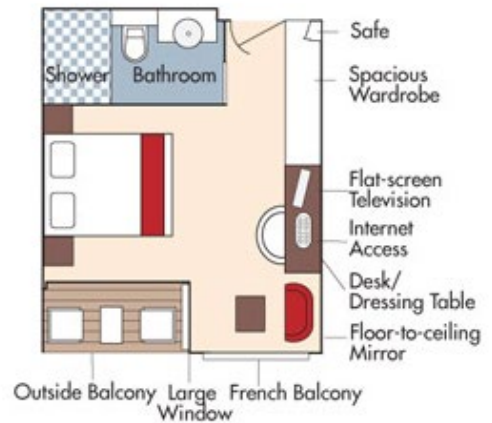
Wine Cruise Rate: \$7,097 pp



### Category BA *Violin Deck*

French Balcony & Outside Balcony, 210 sq. ft.

Wine Cruise Rate: \$6,897 pp



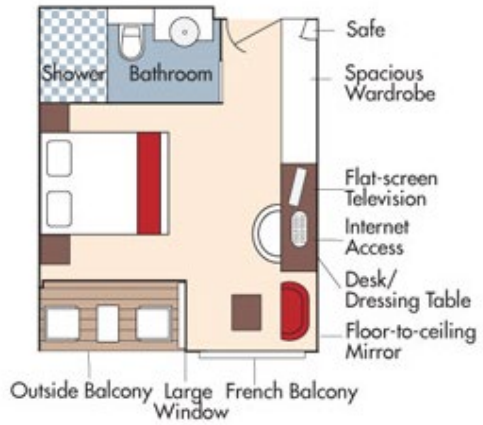




### Category BB *Cello Deck*

French Balcony & Outside Balcony, 210 sq. ft.

Wine Cruise Rate: \$6,697 pp

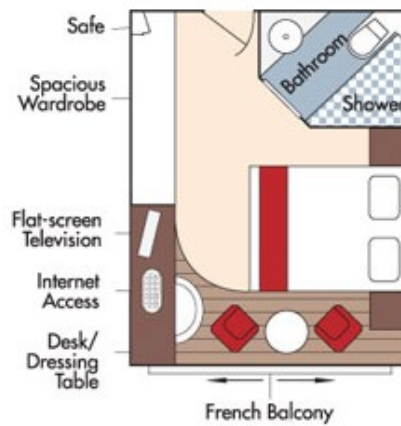


### Category CA *Violin & Cello Deck*

French Balcony, 170 sq. ft.

### Category CA

Wine Cruise Rate: \$6,097 pp

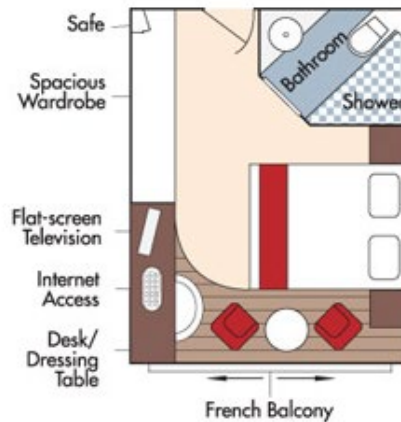


### Category CB *Violin Deck*

French Balcony, 155 sq. ft.

### Category CB

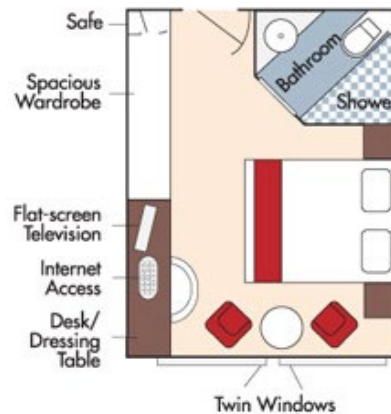
Wine Cruise Rate: \$5,697 pp



Fares listed are cruise-only, per person based on double occupancy and include the exclusive wine package. Port charges of \$224 per person are additional.

**Category D** *Piano Deck*  
Fixed Windows, 160 sq. ft.

Wine Cruise Rate: \$5,097 pp

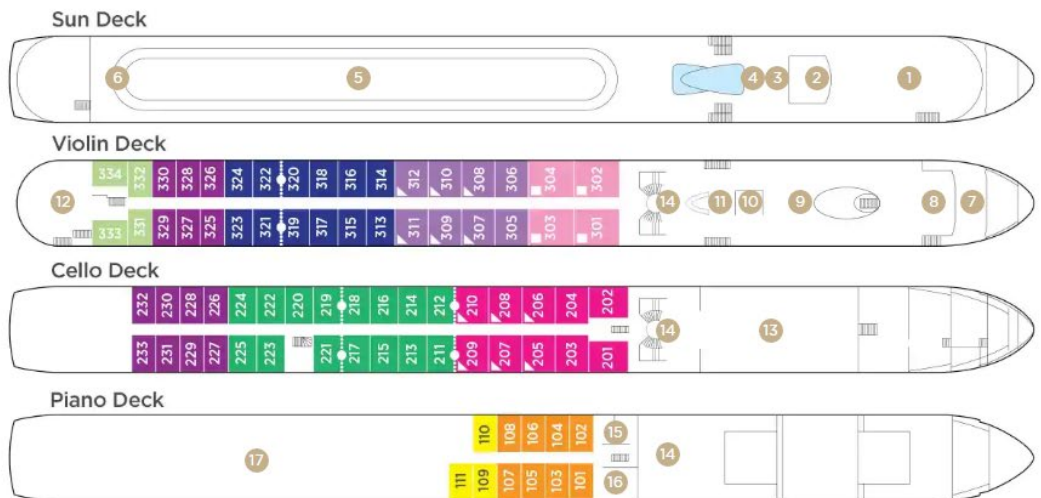


**Category E** *Piano Deck*  
Fixed Windows, 160 sq. ft.

Wine Cruise Rate: \$4,798 pp

*AmaKristina*  
**DECK PLAN**

- 1 Lower Sun Deck
- 2 Navigation Bridge
- 3 Bicycles
- 4 Heated Pool
- 5 Sun Deck
- 6 Walking Track
- 7 Al Fresco Terrace
- 8 Observation Lounge
- 9 Main Lounge & Bar
- 10 Gift Shop
- 11 Reception
- 12 The Chef's Table Restaurant
- 13 Main Restaurant
- 14 Elevator
- 15 Massage & Hair Salon
- 16 Fitness Room
- 17 Crew Cabins



Note: Elevator reaches the Violin, Cello and Piano Deck (does not reach the Sun Deck).

Staterooms can become adjoining by request.

Up to triple occupancy

Stateroom Categories



Fares listed are cruise-only, per person based on double occupancy and include the exclusive wine package. Port charges of \$224 per person are additional.