

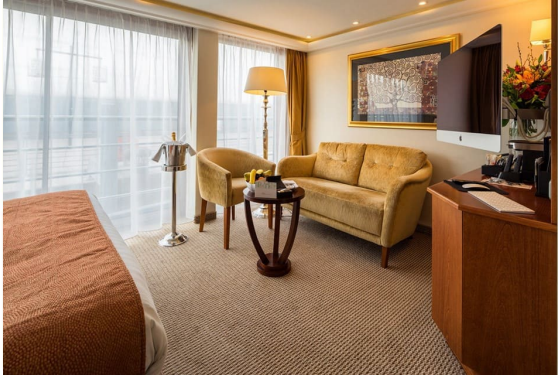
# WINE CRUISE THROUGH BORDEAUX WITH OBELISCO ESTATE

## AmaDolce • April 18 – 25, 2024

Bordeaux • Libourne • Saint-Émilion • Blaye • Bourg • Pauillac • Cadillac

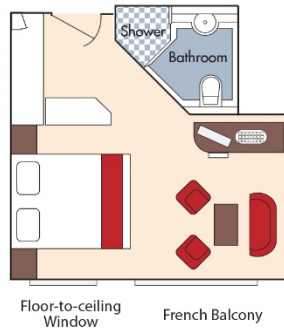
Suite, Violin Deck  
French Balcony, 255 sq. ft.

Note: Stateroom layouts shown below are not to scale.



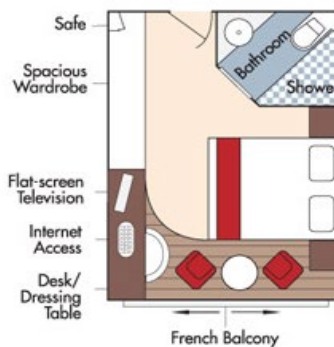
Wine Cruise Rate: \$7,597 pp

CAT. A+, Violin Deck  
French Balcony, 225 sq. ft.



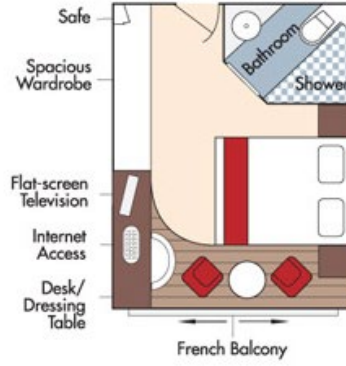
Wine Cruise Rate: \$7,297 pp

CAT. A, Violin Deck  
French Balcony, 170 sq. ft.



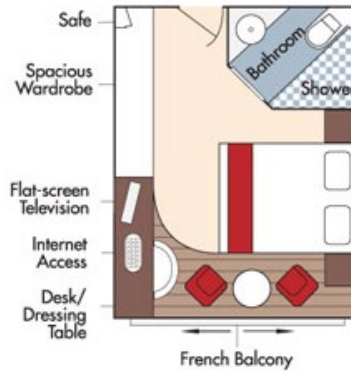
Wine Cruise Rate: \$6,297 pp

CAT. B, Violin & Cello Deck  
French Balcony, 170 sq. ft.



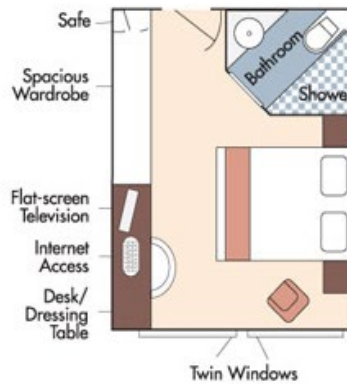
Wine Cruise Rate: \$6,197 pp

CAT. C, Violin & Cello Deck  
French Balcony, 170 sq. ft.



Wine Cruise Rate: \$5,897 pp

CAT. E, Piano Deck  
Fixed Windows, 170 sq. ft.



Category D  
Wine Cruise Rate: \$4,897 pp

Category E  
Wine Cruise Rate: \$4,598 pp

## AmaDolce Deck Plan



Stateroom Categories



Fares listed are cruise-only, per person based on double occupancy and do not include port charges of \$224 per person.